

# Parkheath

*Sold on Service*

---

**Howitt Close NW3**  
**£550,000**



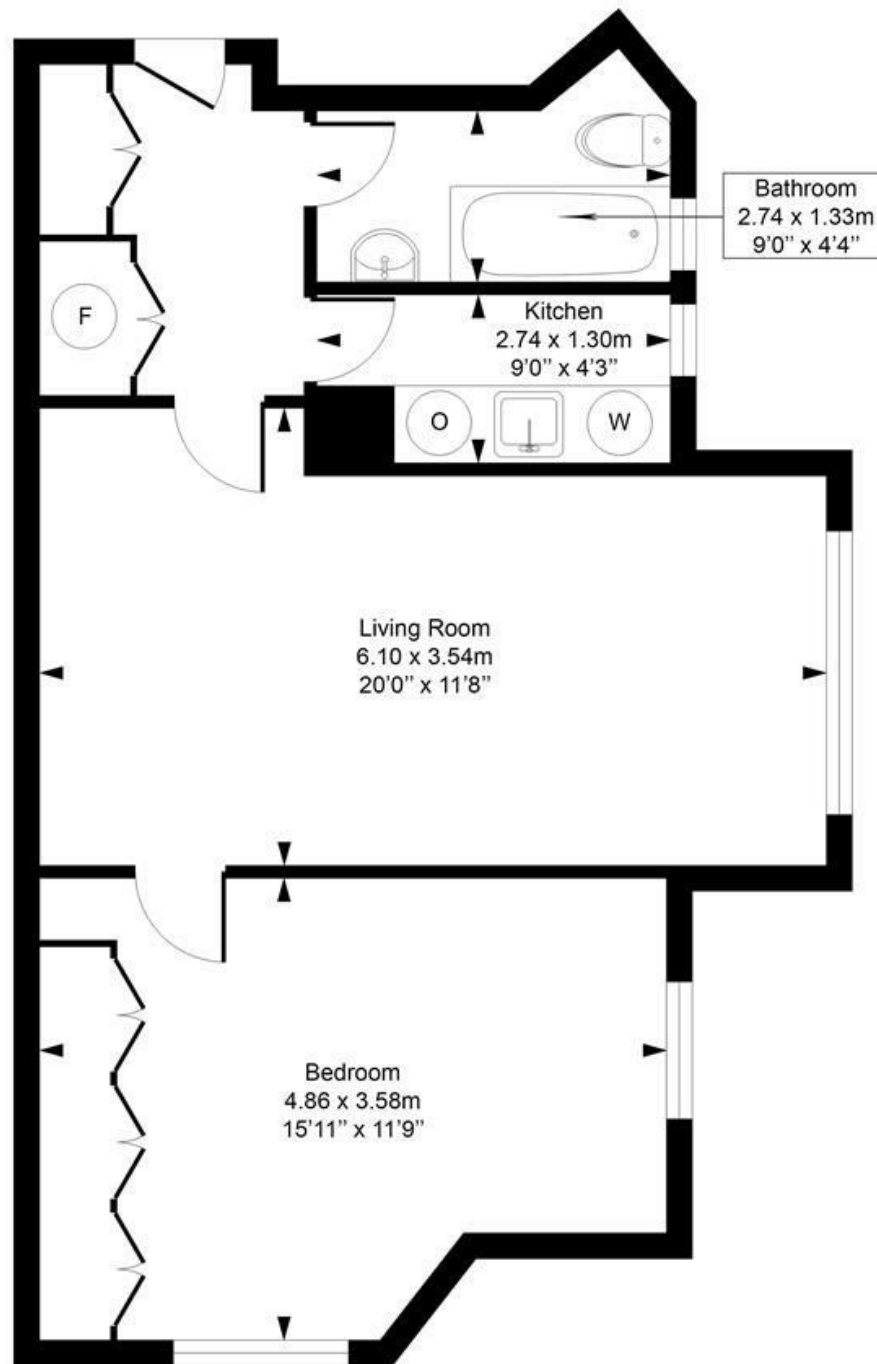
A spacious and bright apartment  
Popular 1930's small mansion block  
Moments from all Belsize Park amenities  
Set on the first floor  
532 sq ft approx

Generous 20' reception  
16' dual aspect bedroom  
Galley kitchen with a window  
180 years from March 1970  
No on going chain

Belsize Park Office 020 7431 3104

## Howitt Close

Approximate Gross Internal Area = 49.4 Sq m / 532 sq ft



### First Floor

This plan is for layout guidance only. Drawn in accordance with RICS guidelines. Not drawn to scale unless stated. Windows & door openings are approximate. Whilst every care is taken in the preparation of this plan, please check all dimensions, shapes & compass bearings before marking any decisions reliant upon them.

ELLIE CLAIRE PHOTOGRAPHY LTD  
[www.ellieclairephotography.com](http://www.ellieclairephotography.com)

The particulars do not constitute part of an offer or contract. The particulars, including text, photographs and plans, are for the guidance only of prospective purchasers/tenants and must not be relied upon as statements of fact. The descriptions provided therein represent the opinion of the author and whilst given in good faith should not be construed as statements of fact. Nothing in these particulars shall be deemed a statement that the property is in good condition or otherwise or that any services or facilities are in good working order. All measurements are approximate